



Accessibility Guide

We want to make everyone's visit as enjoyable as possible and are committed to providing suitable access for all our guests, whatever their individual needs we endeavour to offer the same high quality service. We aim to accurately describe our facilities and services below to give you as much information as possible before booking your visit.

1

Specific accessibility enquiries please contact the owners direct: **Stuart** 07713211132 **Zoe** 07980808096 Email: beach.huts@hotmail.co.uk

Owners can be contacted 24 hours a day.

Getting here

St Annes Beach Huts, The Island, South Promenade, Lytham St Annes, Lancashire FY8 1LS

By car

Take the M6 motorway to junction 32 and follow the M55 signposted Blackpool. At the end of the motorway follow signs to South Shore/Lytham St Annes, proceeding past Blackpool Airport. Follow the seafront road all the way heading to Lytham St Annes. Take the 1st right after St Annes Pier onto the **Island Cinema** seafront car park by the RNLI shop. This is Pay & Display (except for a few spaces marked with red and blue lines immediately in front of the cinema building)

By Taxi

You can get a taxi with Whiteside Taxis by calling 01253 711611. The taxi company has a wheelchair accessible vehicle. You can get a taxi with Premier Cabs by calling 01253 711111. The taxi company has a wheelchair accessible vehicle.

By train

Trains run on a hourly basis from Preston Mainline station to St Annes. There is a taxi rank outside St Annes Station, although, if you prefer to walk, the Beach Huts are just 10 – 15 minutes away. Proceed ahead when you exit the station car park, and pass the parade of shops. At the traffic lights, head to St Annes pier & turn left. The Beach Huts are 5 – 10 minute walk by the miniature golf.

By bus

There is a bus service every 20 minutes to St Annes from Preston Bus Station. Alight at St Annes Square and follow the directions above.



Parking

Closest car parking is via the front Island Cinema car park, this is Pay & Display (except for a few spaces marked with red and blue lines immediately in front of the cinema building). There four Disabled Bays clearly marked. **This car park is operated by Fylde Borough Council**

Fylde Council

ST. ANNES SWIMMING POOL CAR PARK

CONTROLLED HOURS
Monday to Sunday 9am - 6pm Including Bank Holidays

THIS IS A PAY AND DISPLAY OR PERMIT PARKING ONLY CAR PARK
A VALID PAY AND DISPLAY TICKET OR PERMIT IS REQUIRED TO BE DISPLAYED IN VEHICLE ON THE INSIDE OF WINDSCREEN. CIVIL ENFORCEMENT OFFICERS CARRY OUT REGULAR PATROLS

THIS CAR PARK IS MANAGED BY FYLDE BOROUGH COUNCIL

CHARGES PAY AND DISPLAY
Controlled Hours
Monday to Sunday 9am - 6pm
Including Bank Holidays

UP TO 1 HOUR	£1.20
1 - 2 HOURS	£2.20
2 - 3 HOURS	£2.90
3 - 4 HOURS	£3.40
OVER 4 HOURS	£4.50

ALL OTHER TIMES - FREE

MOTORHOMES

OVERNIGHT (6PM TO 10AM) £5.30
9.00AM TO 10.00AM THE FOLLOWING DAY (1 DAY)
UP TO 1 DAY £8.40
1 - 2 DAYS £15.80
2 - 3 DAYS £22.00

MAXIMUM STAY 3 DAYS AND NO RETURN WITHIN 5 DAYS.
ALL TICKETS TO EXPIRE AT 10.00AM DEPENDENT UPON THE NUMBER OF DAYS PURCHASED 2 BAYS IN LENGTH MAXIMUM

FOR MOTORHOMES REGULATIONS PLEASE SEE OVERNIGHT MOTORHOMES PARKING CONDITIONS OF USE

REGULATIONS

- Vehicles must be parked wholly within the marked-out bays
- Vehicles must not cause an obstruction
- Vehicles must not re-park within two hours of leaving a parking bay
- Vehicles must clearly display a valid pay and display ticket or permit
- Tickets are not transferable between cars or car parks
- No Caravans, Horse-Boxes or Trailers allowed on this car park
- No Heavy Goods Vehicles or Coaches
- No Driver Training on this car park except Category A & B vehicles only.

3 HOURS FREE PARKING FOR DISABLED BLUE BADGE HOLDERS IN DISABLED BAYS ONLY. Please set your clock to your arrival time. The Blue Badge and Clock must be clearly displayed in the vehicle on the inside of the windscreen. A valid pay and display ticket must be displayed when parked in another area.

PENALTIES

A Penalty Charge Notice (discounted by 50% if paid within 14 days) will apply for failure to comply with any parking regulations.

PAY AND DISPLAY MACHINE FAULTS
Telephone Fylde Borough Council on 01253 658658

ENQUIRIES

Any enquiries relating to this car park may be addressed to Technical Service Manager, Fylde Borough Council, Town Hall, Lytham St. Annes, Lancashire, FY8 1LW. Tel: 01253 658658

The Council and its Contractor accept no responsibility for any accident, loss or damage to vehicles or their contents however caused

LOCAL PARKING for just £25 a year!

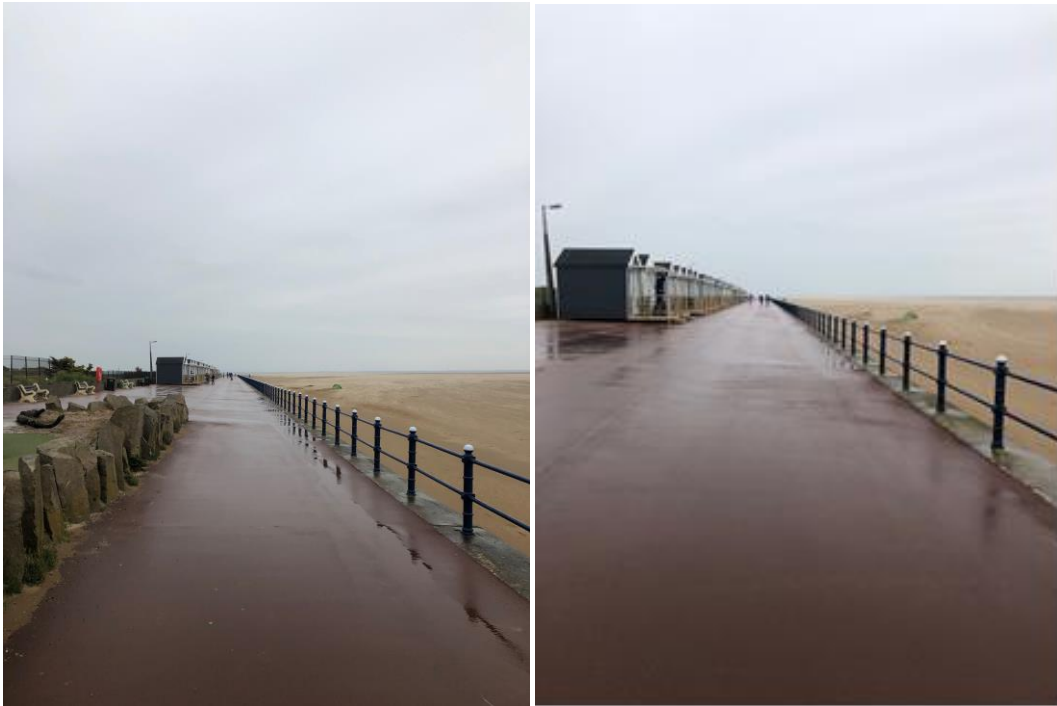
Fylde Borough Residents can park in the new Bay of Bays at a charge of just £25 a year. For more information on the Bay of Bays and other services visit www.fylde.gov.uk/FRP



Level Access

The Beach Huts are situated on a tarmac promenade that provides suitable level access from the car park to the beach huts. Unauthorised Vehicles are not allowed on the promenade. It is approximately 50 meters from the car park to the 1st hut and approximately. 150 meters to the farthest hut.





All Beach Huts except the Show Hut (see below), have a 25cm step up onto the front decking.



Normal Huts (Nos 11 – 45)

The show hut features a ramp up onto a level access platform and 30cm step up onto the front decking



Show Hut

Toilets

A key is provided on your Beach Hut set to access our private toilet facilities located on the corner of the Island Cinema where we provide three standard toilet cubicles. If you required a specific disabled toilet the nearest is located next to the Beach Terrace Café and Fairhaven Road Car Park.



**Disabled Toilets**

Can be accessed 24 Hrs by using a 20p coin or Radar Key. Radar Key are provided free of charge from: The Town Hall, St Annes Road West, St Annes, Lancashire FY8 1LW 01253 658658

Please feel free to contact us and arrange to come and view any of our facilities to get a better feel for the accessibility.

6

We are here to help!

Best wishes

Stuart & Zoe Robertson

Zoe: 07980808096

Stuart: 07713211132

Email: beach.huts@hotmail.co.uk