



## Accessibility Guide

We want to make everyone's visit as enjoyable as possible and are committed to providing suitable access for all our guests, whatever their individual needs we endeavour to offer the same high quality service. We aim to accurately describe our facilities and services below to give you as much information as possible before booking your visit.

1

Specific accessibility enquiries please contact the owners direct: **Stuart** 07713211132 **Zoe** 07980808096 Email: beach.huts@hotmail.co.uk

Owners can be contacted 24 hours a day.

### Getting here

St Annes Beach Huts, The Island, South Promenade, Lytham St Annes, Lancashire FY8 1LS

#### By car

Take the M6 motorway to junction 32 and follow the M55 signposted Blackpool. At the end of the motorway follow signs to South Shore/Lytham St Annes, proceeding past Blackpool Airport. Follow the seafront road all the way heading to Lytham St Annes. Take the 1<sup>st</sup> right after St Annes Pier onto the **Island Cinema** seafront car park by the RNLI shop. This is Pay & Display (except for a few spaces marked with red and blue lines immediately in front of the cinema building)

#### By Taxi

You can get a taxi with Whiteside Taxis by calling 01253 711611. The taxi company has a wheelchair accessible vehicle. You can get a taxi with Premier Cabs by calling 01253 711111. The taxi company has a wheelchair accessible vehicle.

#### By train

Trains run on a hourly basis from Preston Mainline station to St Annes. There is a taxi rank outside St Annes Station, although, if you prefer to walk, the Beach Huts are just 10 – 15 minutes away. Proceed ahead when you exit the station car park, and pass the parade of shops. At the traffic lights, head to St Annes pier & turn left. The Beach Huts are 5 – 10 minute walk by the miniature golf.

#### By bus

There is a bus service every 20 minutes to St Annes from Preston Bus Station. Alight at St Annes Square and follow the directions above.



## Parking

Closest car parking is via the front Island Cinema car park, this is Pay & Display (except for a few spaces marked with red and blue lines immediately in front of the cinema building). There four Disabled Bays clearly marked. **This car park is operated by Fylde Borough Council**

2

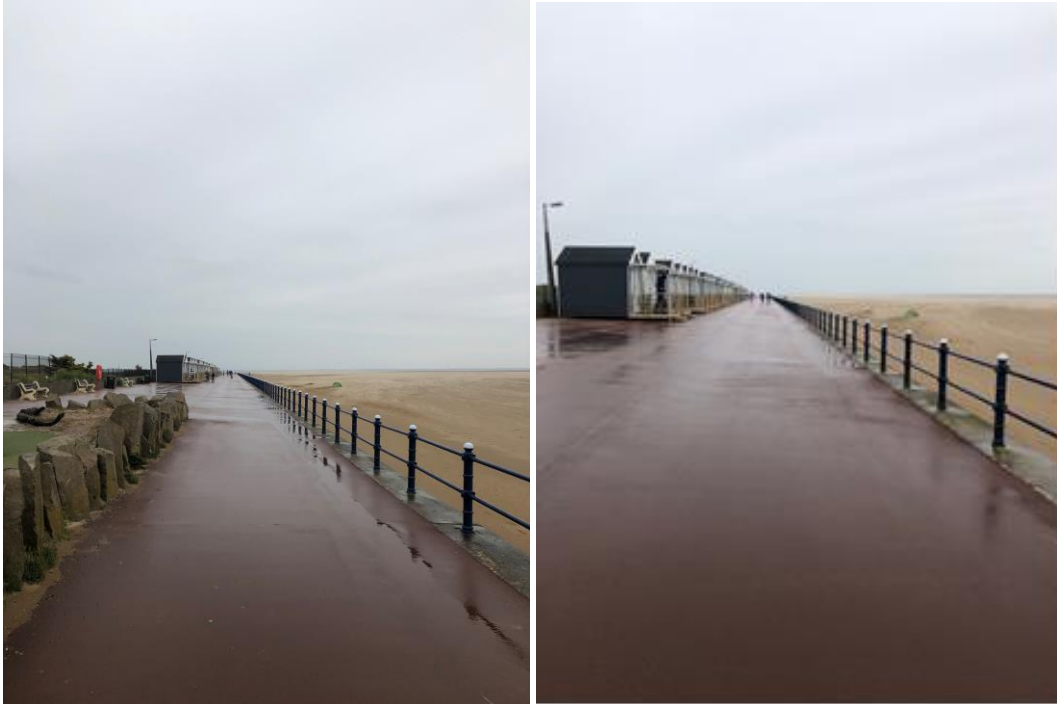




### Level Access

The Beach Huts are situated on a tarmac promenade that provides suitable level access from the car park to the beach huts. Unauthorised Vehicles are not allowed on the promenade. It is approximately 50 meters from the car park to the 1<sup>st</sup> hut and approximately. 150 meters to the farthest hut.





All Beach Huts except the Show Hut (see below), have a 25cm step up onto the front decking.



**Normal Huts (Nos 11 – 45)**

The show hut features a ramp up onto a level access platform and 30cm step up onto the front decking



**Show Hut**

### **Toilets**

A key is provided on your Beach Hut set to access our private toilet facilities located on the corner of the Island Cinema where we provide three standard toilet cubicles. If you required a specific disabled toilet the nearest is located next to the Beach Terrace Café and Fairhaven Road Car Park.



### Disabled Toilets

Can be accessed 24 Hrs by using a 20p coin or Radar Key. Radar Key are provided free of charge from: The Town Hall, St Annes Road West, St Annes, Lancashire FY8 1LW 01253 658658

**Please feel free to contact us and arrange to come and view any of our facilities to get a better feel for the accessibility.**

We are here to help!

Best wishes

**Stuart & Zoe Robertson**

Zoe: 07980808096

Stuart: 07713211132

Email: [beach.huts@hotmail.co.uk](mailto:beach.huts@hotmail.co.uk)