



Accessibility Guide

We want to make everyone's stay as enjoyable as possible, and are committed to providing suitable access for all our guests, whatever their individual needs we endeavour to offer the same high quality service. We aim to accurately describe our facilities and services to give you the confidence to book the right Apartment for your specific requirements.

Specific accessibility enquiries please contact the owners direct: **Stuart** 07713211132 **Zoe** 07980808096
Email: apts@stannesbeachhuts.co.uk

Owners can be contacted 24 hours a day.

Getting here

St Annes Beach Apartments, 121 – 123 South Promenade, Lytham St Annes, Lancashire FY8 1NP

By Taxi

You can get a taxi with Whiteside Taxis by calling 01253 711611. The taxi company has a wheelchair accessible vehicle.

You can get a taxi with Premier Cabs by calling 01253 711111. The taxi company has a wheelchair accessible vehicle.

By car

Take the M6 motorway to junction 32 and follow the M55 signposted Blackpool. At the end of the motorway follow signs to South Shore/Lytham St Annes, proceeding past Blackpool Airport. At the traffic lights turn left, and at the second set of traffic lights turn right. At the T junction (facing the pier) turn left and the Apartments are approximately 1500 yards on the left hand side.

By train

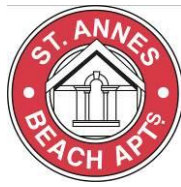
Trains run on a hourly basis from Preston Mainline station to St Annes on the Sea. There is a taxi rank outside St Annes Station, although, if you prefer to walk, the Apartments are just 10 minutes away. Proceed ahead when you exit the station car park, and pass the parade of shops. At the traffic lights, cross over, and pass the Lord Derby Public House on the right hand side. At the T junction facing the pier, turn left. The Apartments are approximately 1500 yards on the left hand side.

By bus

There is a bus service every 20 minutes to St Annes from Preston Bus Station. Alight at St Annes Square and follow the directions above.

Parking

We have a large car park with accessible parking spaces. The parking is less than 15 metres from the main entrance. Parking is free. There is a drop-off point at the main entrance. There is dedicated paved parking spaces outside the main apartment building with ample room for unloading and manoeuvring.



Level Access

On the right hand side of the main entrance to the Apartment building there is a ramp for access onto a level porch and decked area.





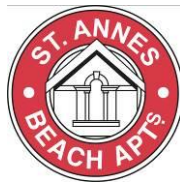
We can charge a mobility scooter or battery powered wheelchair inside the main glass porch area where it can also be securely stored.

You can hire mobility equipment from ASC Mobility 01253 796696



The main entrance doorway then has a 16cm step up onto level access to all the ground floor Apartments





3 Ground Floor Apartments:

01 Shoreline Apartment

02 Seagrass Apartment

03 Pebbles Apartment



GROUND FLOOR

Subject to slight variations

Please note: all apartments are suitable for up to 4 adults only plus children in bunk beds or sofa beds as shown.

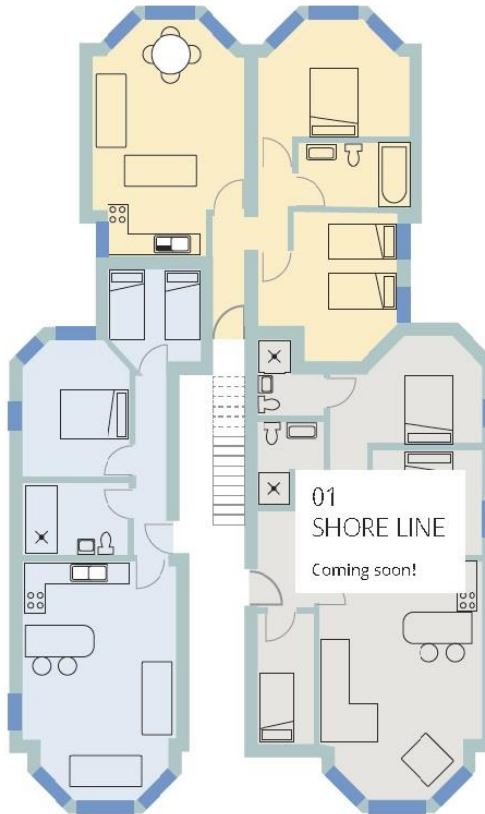
02 SEAGRASS

Ground floor sea view with wheelchair access
Sleeps 4
and up to 6 (sofa bed)

1 x Double bedroom
1 x Twin bed
Shared wetroom

Lounge room with double sofa bed

Kitchen



03 PEBBLES

Ground floor garden view with direct access to the garden.

Sleeps 4
and up to 5 (sofa bed)

1 x Double bedroom
1 x Twin/Double *
Shared bathroom with shower over bath

Lounge with patio doors to garden and sofa-bed

Kitchen



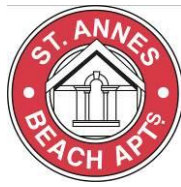
01 Shoreline Apartment

2nd entrance door with ramped access



The route to the Apartment is 175cm wide. The entrance doorways are 85cm wide. The route to all bedrooms and kitchen area is 85cm wide. There is unobstructed floor space 120cm by 900cm





Walk in shower and a separate bathroom with a bath. Bathrooms do not have handrails





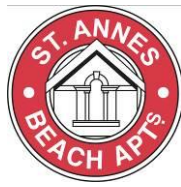
02 Seagrass Apartment

The route to the Apartment is 175cm wide. The entrance doorways are 85cm wide. The route to all bedrooms and kitchen area is 85cm wide. There is unobstructed floor space 120cm by 900cm



02 Seagrass Apartment bathroom has a level access shower





03 Pebbles Apartment

The route to the Apartment is 175cm wide. The entrance doorways are 85cm wide. The route to all bedrooms and kitchen area is 85cm wide. There is unobstructed floor space 120cm by 900cm



03 Pebbles Apartment Bathroom has a bath (no hoist and no handrail)





We have emergency evacuation procedures for disabled visitors. Guest information files in Apartments give details of local services and emergency procedures.



All Apartment TVs have subtitles

Please feel free to contact us and arrange to come and view any of the properties to get a better feel for the accessibility.

We are here to help!

Best wishes

Stuart & Zoe Robertson

Zoe: 07980808096

Stuart: 07713211132

Email: beach.huts@hotmail.co.uk